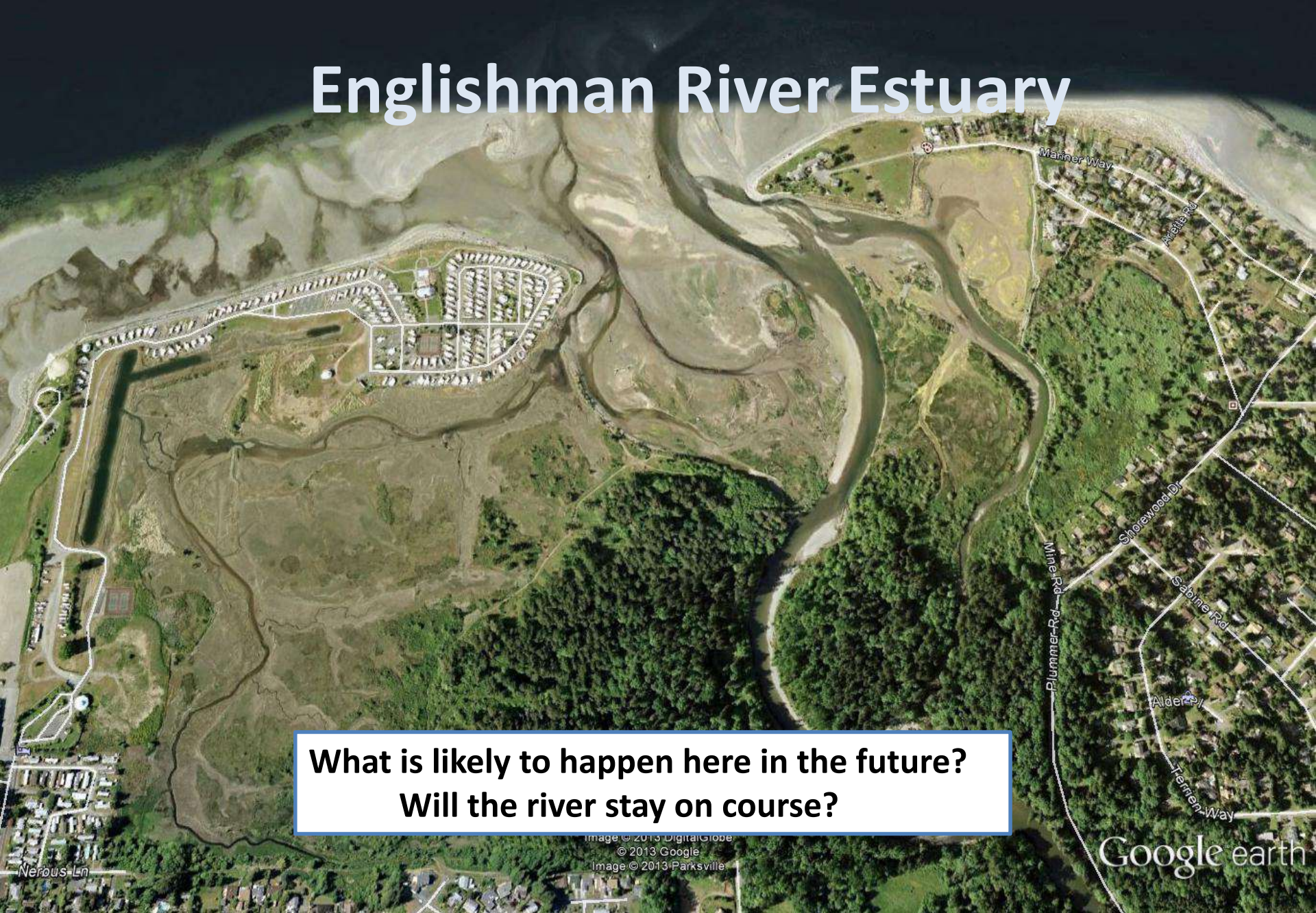


Englishman River Estuary



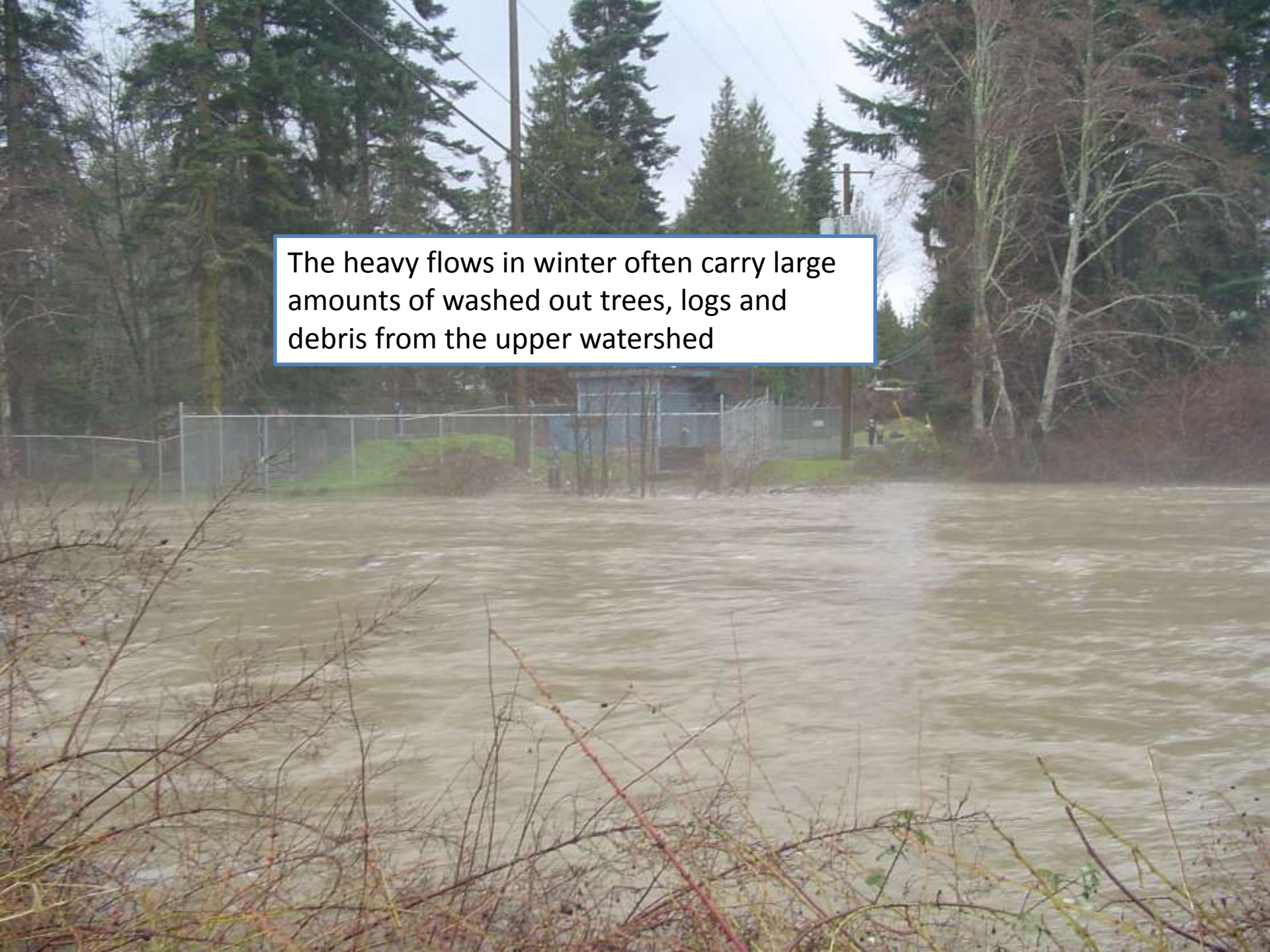
**What is likely to happen here in the future?
Will the river stay on course?**

Image © 2013 DigitalGlobe
© 2013 Google
Image © 2013 Parksville

Google earth

The Englishman River is subject to extremely heavy flows in winter and almost no flow in late summer



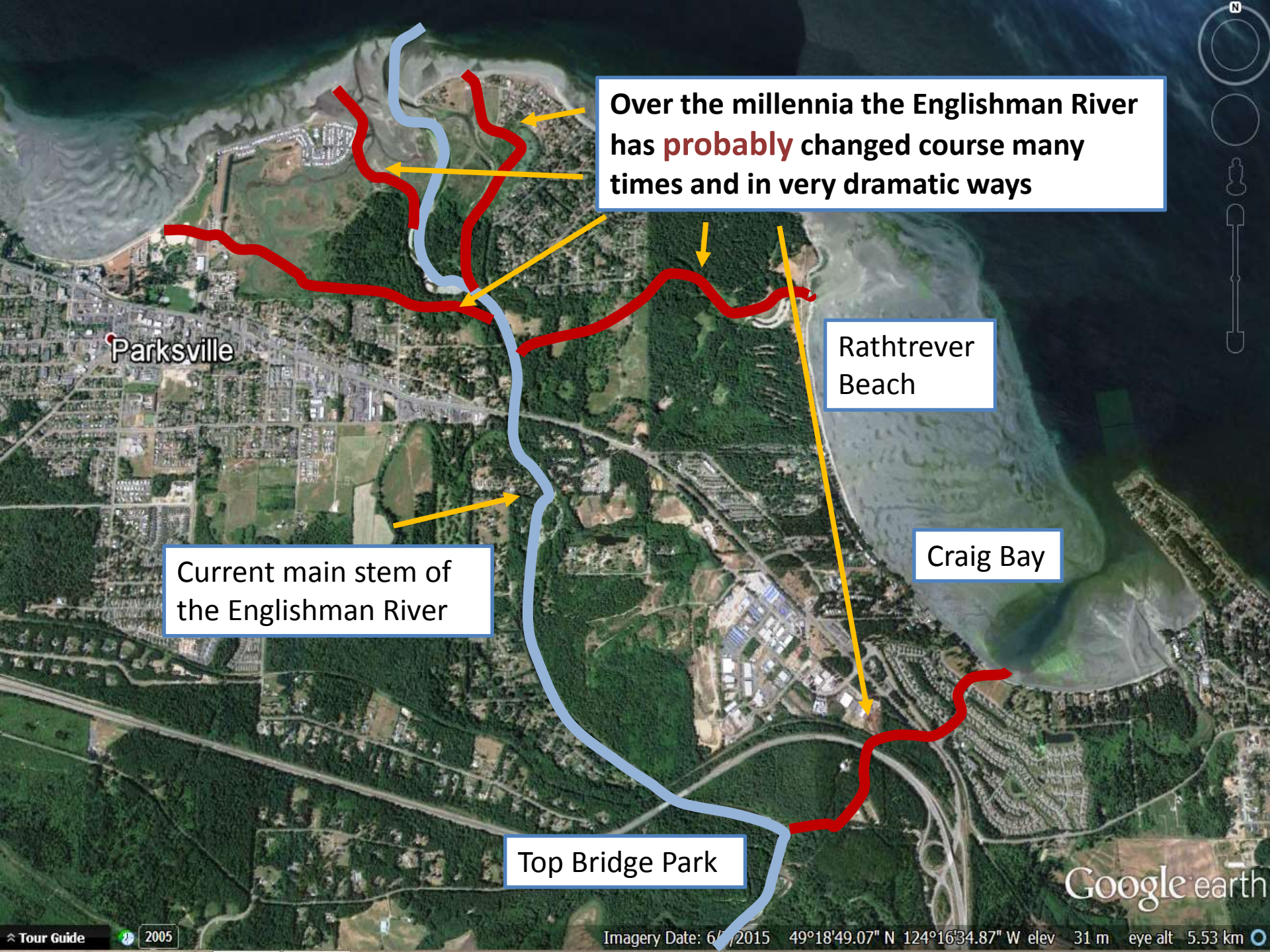
A photograph showing a flooded area. In the foreground, there are bare, brown branches. The middle ground is filled with murky, brown floodwater. In the background, a building with a blue roof and a chain-link fence are visible. Tall evergreen trees line the far bank. A text box is overlaid on the upper left portion of the image.

The heavy flows in winter often carry large amounts of washed out trees, logs and debris from the upper watershed



These trees and wood often create logjams in the lower reaches of the river and in the estuary





Over the millennia the Englishman River has **probably** changed course many times and in very dramatic ways

Rathtrever Beach

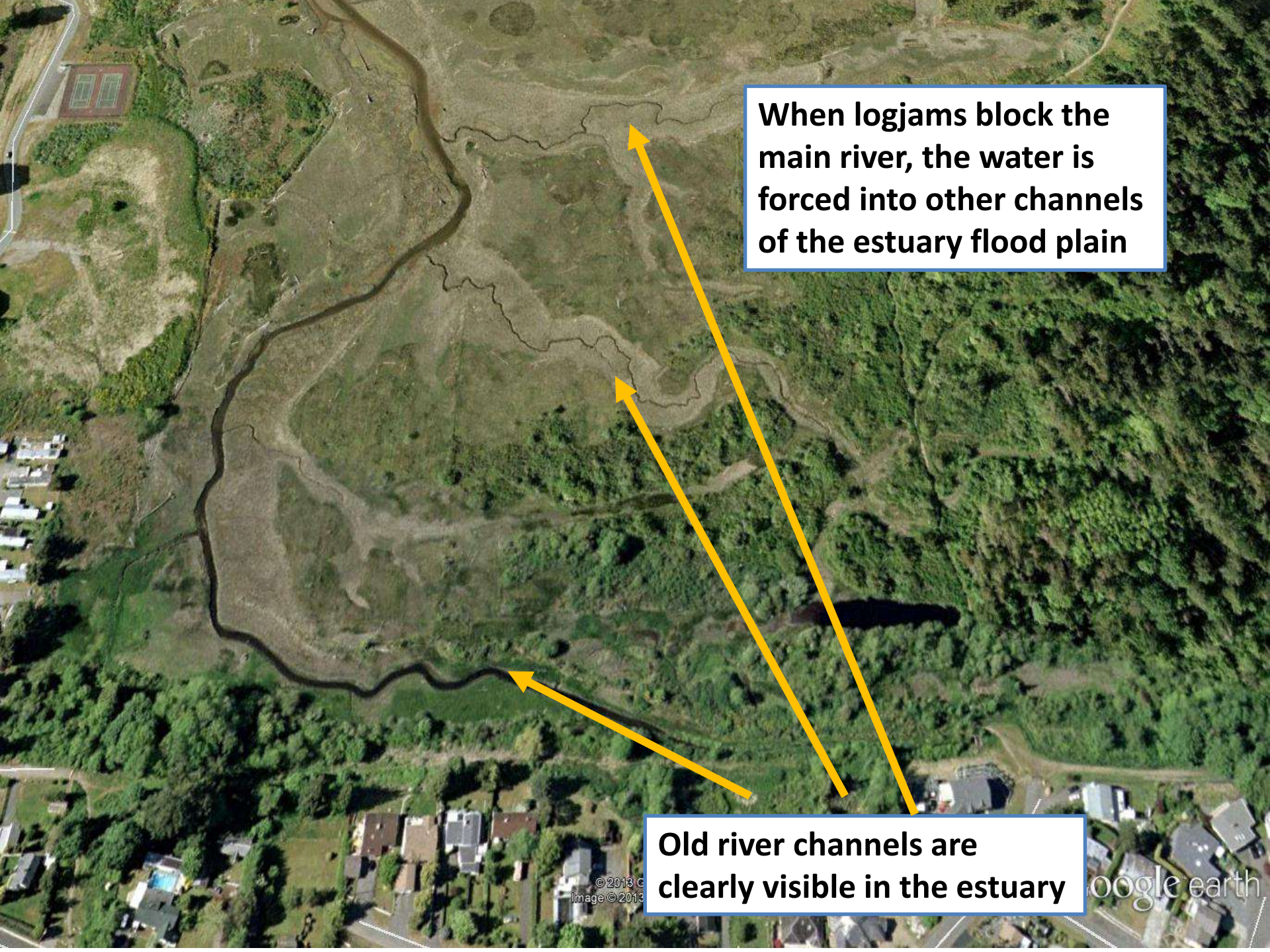
Craig Bay

Current main stem of the Englishman River

Top Bridge Park

Parksville

Google earth



When logjams block the main river, the water is forced into other channels of the estuary flood plain

Old river channels are clearly visible in the estuary

The Englishman River Estuary

San Paniel

Surfside RV Resort

Multiple channels have formed and reform within the Estuary

Image © 2013 Google
© 2013 Google
Image © 2013 Parkville

Google earth

An aerial photograph showing a coastal area. At the top, a resort with many white RVs and some buildings is situated. Below the resort, a large, muddy, brownish-green area represents a floodplain. Several winding channels of water or mud are visible, cutting through the floodplain. Three yellow arrows point to these channels. The resort is bordered by a body of water on the left and right sides. The overall scene illustrates the impact of flooding on a developed area.

Surfside RV Resort

The old channels reform during flood conditions


An aerial photograph showing a large body of water with several winding, light-colored channels. A road, labeled 'Beachside Dr', runs along the bottom edge of the water body. To the right of the road is a green area with some buildings and a parking lot. Further right is a residential area with many houses. Three yellow arrows point from the right side of the image towards the water channels. One arrow points to a channel near the top right, another to a channel in the middle, and a third to a channel further down. A text box on the right contains the text 'Even appearing to flow under the Community Park into Parkville Bay'. A text box at the top left contains the text 'Old estuary channels'.

Old estuary channels

**Even appearing to
flow under the
Community Park into
Parkville Bay**

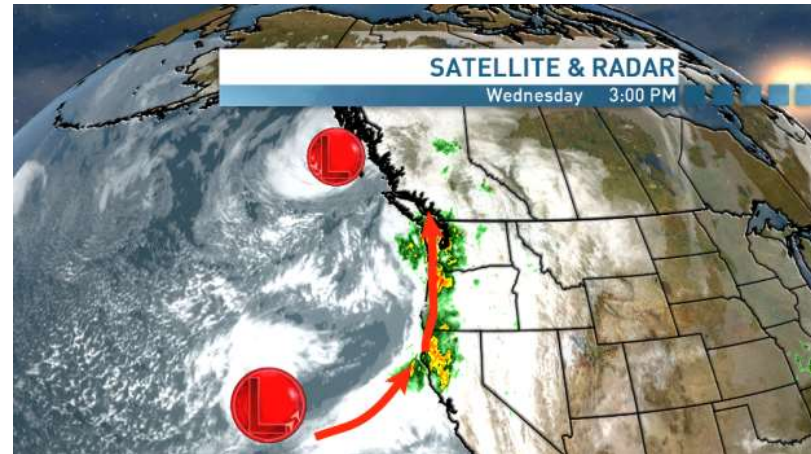


High tides and waves on the other side



**High tides of 5 meters or 16 ½ feet
often occur during the winter months
Even during calm weather can be
within about ½ a meter of potential
flooding of property**

When a high tide and storm surge combine with a flood event in the river, the Englishman River floodplains and estuary could be inundated



**All flood prone areas should be
clearly mapped and signed so that
owners and residents can be
prepared when conditions dictate**

...Trevor Wicks ... Dec 2015
TRENTEC INNOVATIONS
Web. <http://www.innovationbc.com>